

Since 1994, Kimble Recycling & Disposal, Inc. has provided convenient recycling service to our Eastern Ohio customers. Take a minute to learn about our easy recycling program and what we recycle.

Contamination in the recycling stream is making it difficult to process clean recyclable material. Items such as plastic bags, food residue, styrofoam, batteries, electronics, etc. are among the top contaminants and are not accepted at our recycling center.

If your item is not on the approved list please put it directly into the trash. All items should be clean, dry and placed loosely (unbagged) into your recycling. Together, we can help protect the environment and build a more sustainable future.

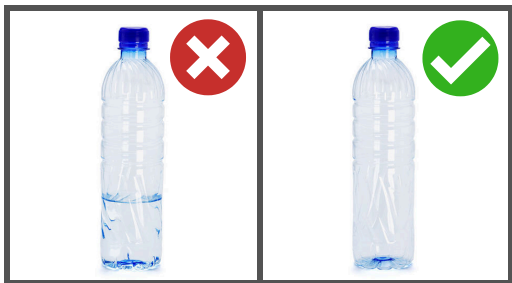


RECYCLING RIGHT - In 3 Easy Steps...



1 When in doubt... **THROW IT OUT!**

Make sure that all items are on the Kimble Recycling Center's approved list of accepted recyclables. If the item is not on the list or if you are unsure, place it directly into the trash.



2 Recyclables must be clean and dry.

Food and liquid are contaminants. No dirty jars or bottles with water still in them. Cardboard must also be clean and dry. Greasy pizza boxes are not recyclable.



3 No need to sort or bag your items.

Place your approved recyclables in your Kimble Recycling Cart all together. Items should be loose and unbagged. Plastic bags one of the largest contaminants at our Recycling Center.

PAPER & NEWSPAPER

Paper should be clean and dry. Please no glossy paper or foil wrapping paper. Paper should not be stained by waste. Magazines, mail, newspapers and copier paper are accepted.



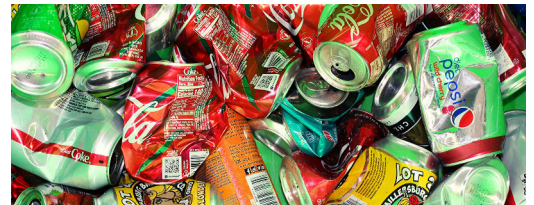
CARDBOARD

Cardboard must be clean and dry. It should be flattened and be emptied of any packing materials. No food contamination such as grease on pizza boxes.



METAL AND ALUMINUM CANS

Only metal or aluminum food and drink cans are accepted. They should be empty, clean and dry before being placed loosely in the recycling cart. No other metal items are accepted.



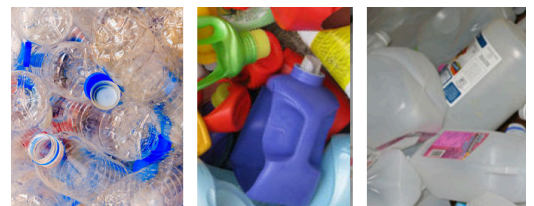
GLASS BOTTLES

All glass bottles should be empty, clean and dry before being placed loosely in the recycling cart. Please no glassware, mirrors, window panes or light bulbs.



PLASTICS JUGS & BOTTLES

Only clean and empty plastic bottles and jugs are accepted. Please do not crush the bottles and keep lids on. No other plastic items are accepted - even if they have a recycle logo.



NOT ACCEPTED

- WOOD
- PAINT CANS
- ANTI-FREEZE
- WAX CARTONS
- BATTERIES
- LIGHT BULBS
- MOTOR OIL CONTAINERS
- HOSES
- WIRE HANGERS
- PLASTIC BAGS
- STYROFOAM
- CHRISTMAS LIGHTS
- TOYS
- PLASTIC UTENSILS
- PLASTIC FURNITURE
- YARD WASTE



**NO
PLASTIC BAGS**



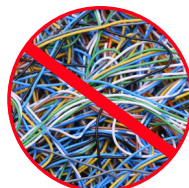
**NO
GARBAGE**



**NO
FOOD OR LIQUIDS**



**NO
CLOTHING**



**NO
HOSES/WIRES/CHAINS**



**NO
ELECTRONICS**